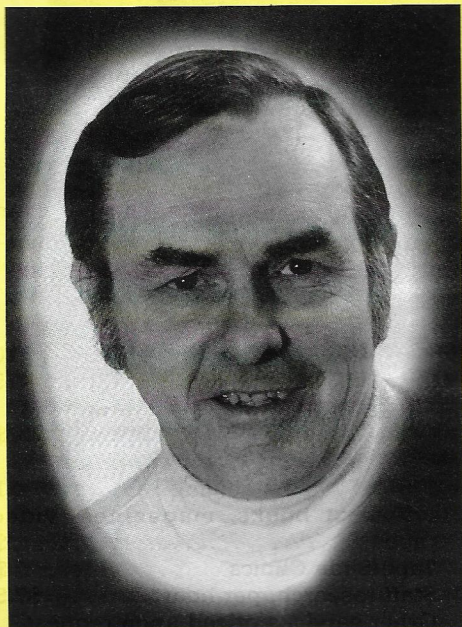


MASTER MODEL RAILROADERS



Gayle M. Olson

by Bill Ehlert, MMR

MASTER MODEL RAILROADER #113 GAYLE M. OLSON

Gayle Olson of the Thousand Lakes Region has become MMR #113. Gayle is 56. He lives in Eden Prairie, Minn., with his wife Delores and daughter Deborah. He is a graduate of the University of Minnesota and a Korea veteran. For the past 31 years Gayle has been an insurance salesman. In addition to model railroading, Gayle pursues several other hobbies: motorcycle riding, security analysis, computer programming, photography and stamp collecting.

Gayle first became interested in model railroading at the age of 14 when he built his first Lionel layout on a ping-pong table. The early articles of Frank Ellison were a great influence on Gayle's pursuit of the hobby. He dropped the hobby for a time, but in 1962 a neighbor got him interested, so

he built his first HO layout and became active in the Progress Valley Model Railroad Club in Shakopee, Minn. In 1965 he moved to Eden Prairie and found space in a new house to begin the Deesville & Heatherton Railroad Co. Several trips to Colorado caused him to model On3. His modeling plans now are to return to HO and model the Soo Line of the 1950's using first-generation diesels.

Gayle has been active in all levels of the NMRA. He attended his first convention in 1964 in Philadelphia and has been to 14 others since. He has served as TLR president, Plains VP, pass contest chairman, and is currently AP chairman for the Twin Cities Division. He is a member of the Minneapolis Society of Model Engineers which now has three MMR's.

Gayle enjoys the opportunities the NMRA has provided for his meeting fellow modelers and making many good friends. He found the AP to be a personal challenge that he ultimately could not resist. To him, it's fun, challenging, educational, and rewarding.

He holds certificates for Cars, Structures, Scenery, Dispatcher, Official, Volunteer, and Author.